



Beaufort County Public Works Stormwater Infrastructure Project Summary

Project Summary: Gray Road

Activity: Routine/Preventive Maintenance

Narrative Description of Project:

Removed blockages from flowline. Repaired washout.

Completion: Mar-13

2013-614 / Gray Road	Labor Hours	Labor Cost	Equipment Cost	Material Cost	Contractor Cost	Indirect Labor	Total Cost
AUDIT / Audit Project	0.5	\$10.45	\$0.00	\$0.00	\$0.00	\$6.62	\$17.06
HAUL / Hauling	18.0	\$391.38	\$171.20	\$157.41	\$0.00	\$253.10	\$973.09
ONJV / Onsite Job Visit	5.0	\$112.74	\$20.10	\$12.48	\$0.00	\$91.15	\$236.47
PRRECON / Project Reconnaissance	2.0	\$51.30	\$8.04	\$17.16	\$0.00	\$36.46	\$112.96
RB / Remove blockage from flowline	8.0	\$179.54	\$8.04	\$12.48	\$0.00	\$113.16	\$313.22
RPWO / Repaired Washout	33.5	\$747.37	\$133.07	\$33.85	\$0.00	\$418.15	\$1,332.44
2013-614 / Gray Road	67.0	\$1,492.77	\$340.45	\$233.38	\$0.00	\$918.64	\$2,985.24
Grand Total	67.0	\$1,492.77	\$340.45	\$233.38	\$0.00	\$918.64	\$2,985.24

Before



After



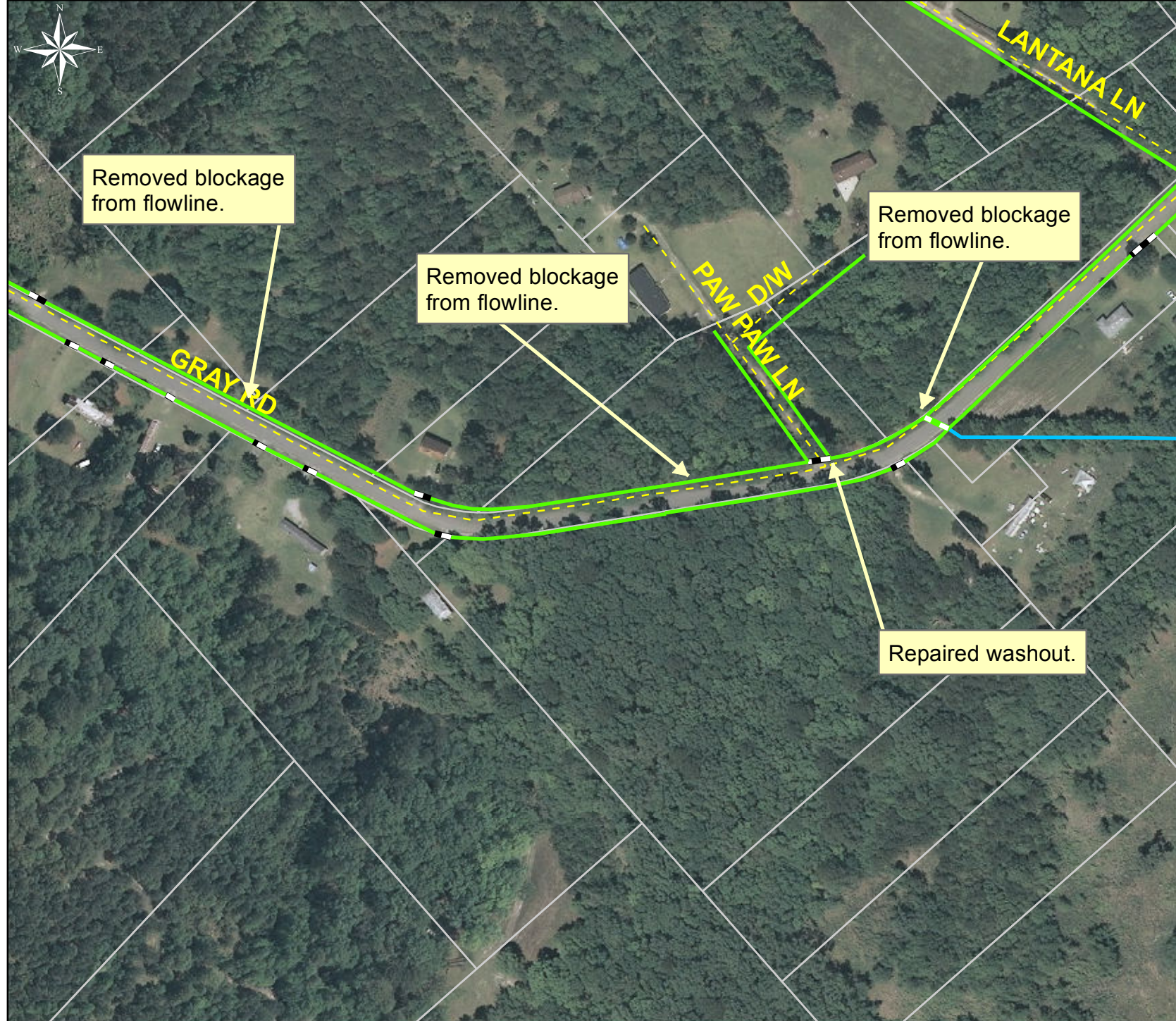
Project: Gray Road

**Activity: Routine/
Preventive
Maintenance**

**Project #:
2013-614**

**Township:
Sheldon**

**Completed:
March 2013**



Legend

TYPE

- River
- - - Creek/Stream
- River/Creek/Marsh BANK
- Channel (fka Outfall)
- - - Channel Pipe
- Lateral
- - - Lateral Pipe
- Roadside
- - - Roadside Pipe
- Road Pipe
- - - Crossline Pipe
- - - Driveway Pipe
- - - Access Pipe
- Bleeder Pipe
- Parcels



1 inch = 208 feet

Prepared By: BC Stormwater Management Utility

Date Print: 4/12/13

File:C:/sethdata/projects/projectmaps/Gray Rd 2013-614